

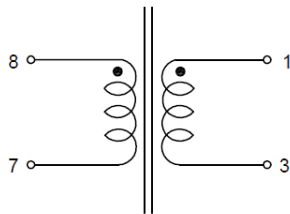
Features:

- Height: 5.50mm Maximum.
- Footprint: 8.40mm x 7.20mm Maximum.
- Current Rating: up to 20A;
- Frequency Range: 20KHz To 1MHz.
- Low Primary DCR value.
- Operating Temperature: -40°C to + 125°C.

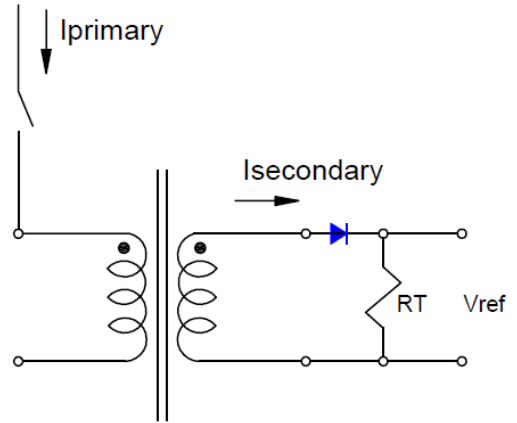
1. Inductance measured and turns ratio at 100KHz,0.1Vrms
2. Electrical Specifications Measured At 25°C.
3. Current Rate That Causes The Specified Temperature Rise from 25°C Ambient.
4. Ambient Temperature Range: -40°C To +85°C With Rate Current.
5. Storage Temperature Range: -55°C To 130°C.
6. To Determine Maximum Operation Parameters For

UnipolarCurrent, Use The Following Formulas:

- a). Terminating Resistor: $RT = (Ns * Vref) / (Np * Ipeak)$
- b). Maximum Flux Density (Teslas): $Bpk = (Vref * DuCy_max) / (Ns * 2.66E-6 * Freq)$, Recomend $Bpk_max = 0.20$ Tesla.



SCHMATIC



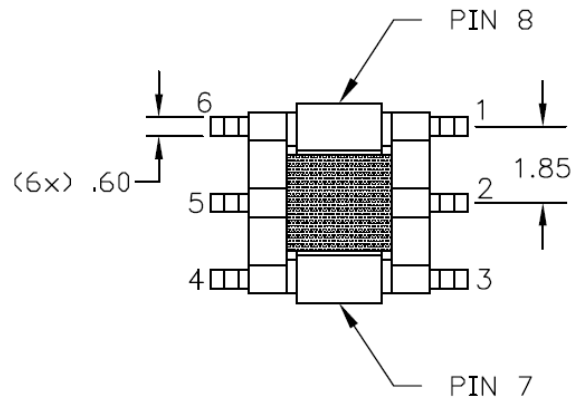
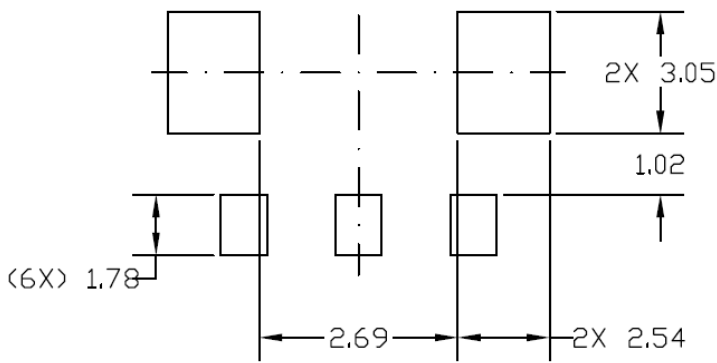
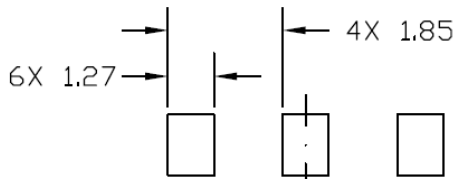
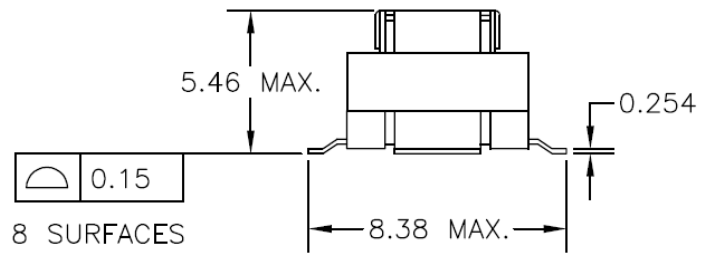
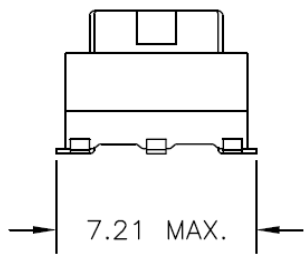
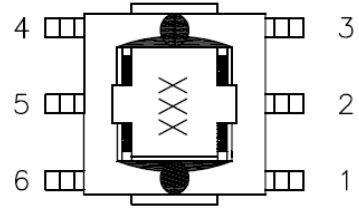
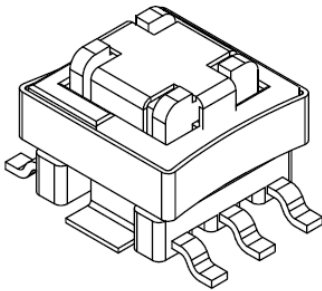
APPLICATION CIRCUIT

| Part number | Turns Ratio | Current Rating (A) | Secondary Inductance (mH MIN) | DCR | | HI-POT VRMS |
|--------------|-------------|--------------------|-------------------------------|-------------------------|--------------------------|-------------|
| | | | | Primary (8-7) mOHMS MAX | Secondary (1-3) OHMS MAX | |
| IOE1000-020S | 1:20 | 20 | 0.08 | 0.75 | 0.35 | 500 |
| IOE1000-030S | 1:30 | 20 | 0.18 | 0.75 | 0.50 | 500 |
| IOE1000-040S | 1:40 | 20 | 0.32 | 0.75 | 0.85 | 500 |
| IOE1000-050S | 1:50 | 20 | 0.50 | 0.75 | 1.30 | 500 |
| IOE1000-060S | 1:60 | 20 | 0.72 | 0.75 | 1.60 | 500 |
| IOE1000-070S | 1:70 | 20 | 0.98 | 0.75 | 3.20 | 500 |
| IOE1000-100S | 1:100 | 20 | 2.00 | 0.75 | 5.40 | 500 |
| IOE1000-125S | 1:125 | 20 | 3.00 | 0.75 | 6.70 | 500 |



INTER OUTSTANDING ELETRONINCS,INC.

SMD CURRENT SENSE TRANSFORMERS



RECOMMENDED PCB LAYOUT